

Printing the single page target

The Principle

To make a custom printer profile we need to measure exactly what colours a printer actually prints without any interference from any software in your work flow.

In order to measure this you need to print the supplied target file without ANY colour management being applied AT ALL, at any stage. The same principle applies with all printers, all printing software and every operating system.

The target will fit onto a single A4 Portrait format sheet of paper.

Do NOT resize it to fit and do NOT cut the target out of a standard sheet.

If you are printing on roll paper, please do not cut the target exactly round the dotted limits, but leave at least an extra margin of about 1cm around the box for handling purposes.

Please note this single page target set is ONLY suitable for normal photo printing paper and we can't measure this target when printed on other materials e.g. canvas or card. If in any doubt please email us, info@colourprofiles.com, for advice to help save your time and materials.

Once the target has been printed leave it to dry fully. **Check them to ensure that the dotted box is the correct size on all sheets, 267mm x 190mm.**

Please note that if you use Adobe Color Printer Utility with Windows systems it resizes the targets to 255mm x 186mm and prints them off centred on the page. In the specific case of ACPU this resizing is acceptable, but not with any other software.

Please carefully package the target with a sheet of plain paper on top of the sheet to prevent any damage, preferably with a sheet of card to prevent damage in transit, fill in the order form, print it out and send it all to us.

PLEASE ENSURE THAT YOUR EMAIL ADDRESS IS EASILY READABLE.

To ensure prompt delivery check that the package is correctly stamped with the correct amount.

Much of the detail below duplicates the instructions on our web site on how to set up and use colour management. Please make sure you

double check what's written below for your particular products before printing out the targets.

Printing software settings

Printing software must be set to NOT to impose or change the colour space of the file and NOT to apply any sort of profile to the image sent to the printer. Please read the instructions for each manufacturer and follow them exactly. You may be surprised having read the above that the first instruction in most sections will be to turn colour management ON, not off. The reason for this is take control of the colour management system away from the operating system defaults to ensure that no profile is unknowingly applied.

Adobe Products

Recent Adobe products Photoshop CS5, CS5.5, CS6, CC and all versions of Lightroom

All the above products can't be used to print out printer profiling targets as it is impossible to fully turn off colour management.

To get round this Adobe have a free utility to print out profiling targets, Adobe Color Printer Utility. It can be downloaded from:-

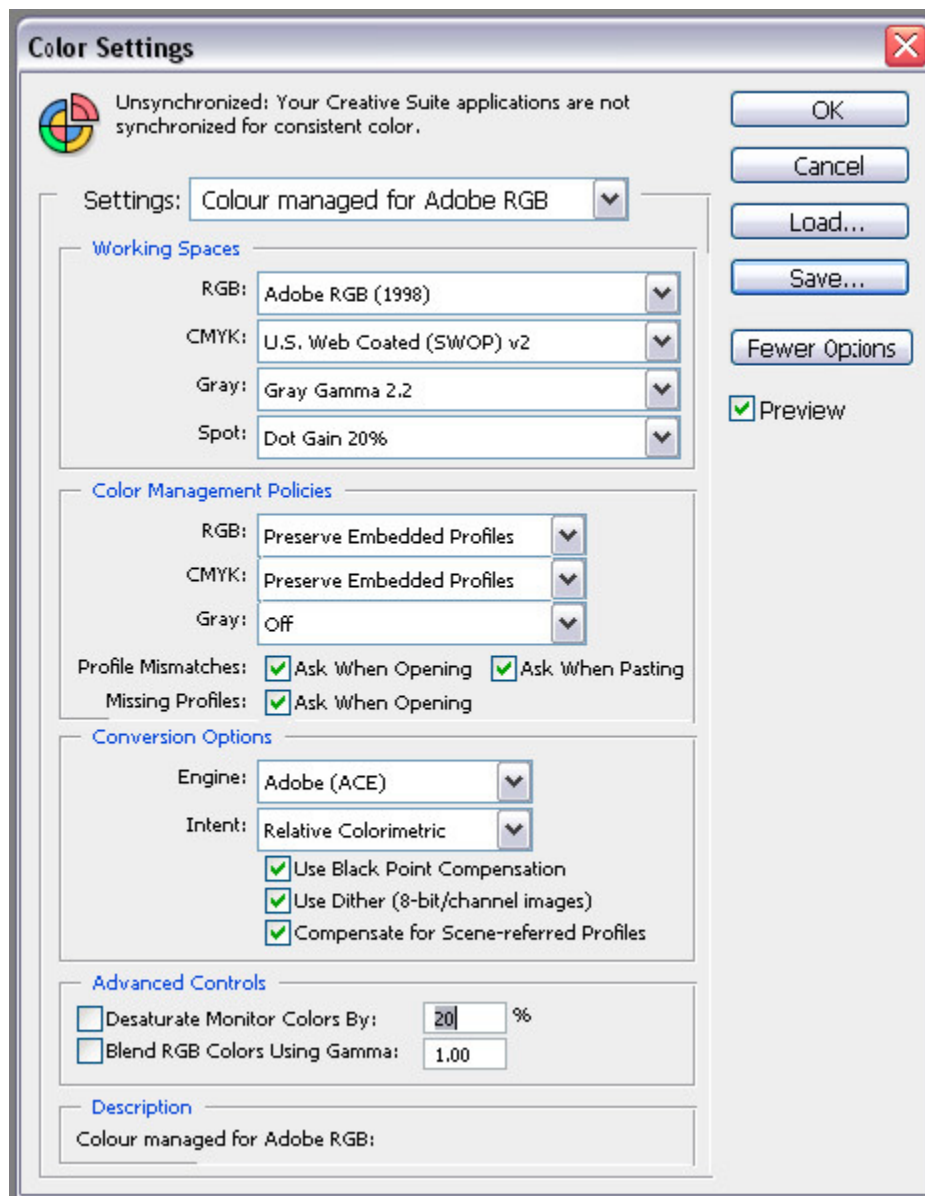
<http://helpx.adobe.com/photoshop/kb/no-color-management-option-missing.html>

You will need to use this to print out our targets. The instructions for use are on the download page.

Photoshop colour settings (all previous versions)

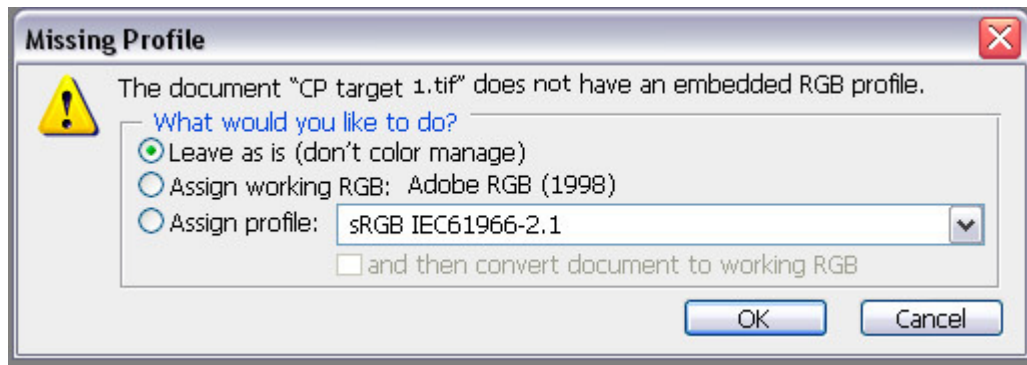
It's important that no colour management is ever applied to the target files prior to printing.

In Photoshop this is controlled by the 'Color settings dialogue' found in the edit menu.



The important settings are in the color management policies section. Preserve embedded profiles, coupled with Missing profiles 'Ask when opening'

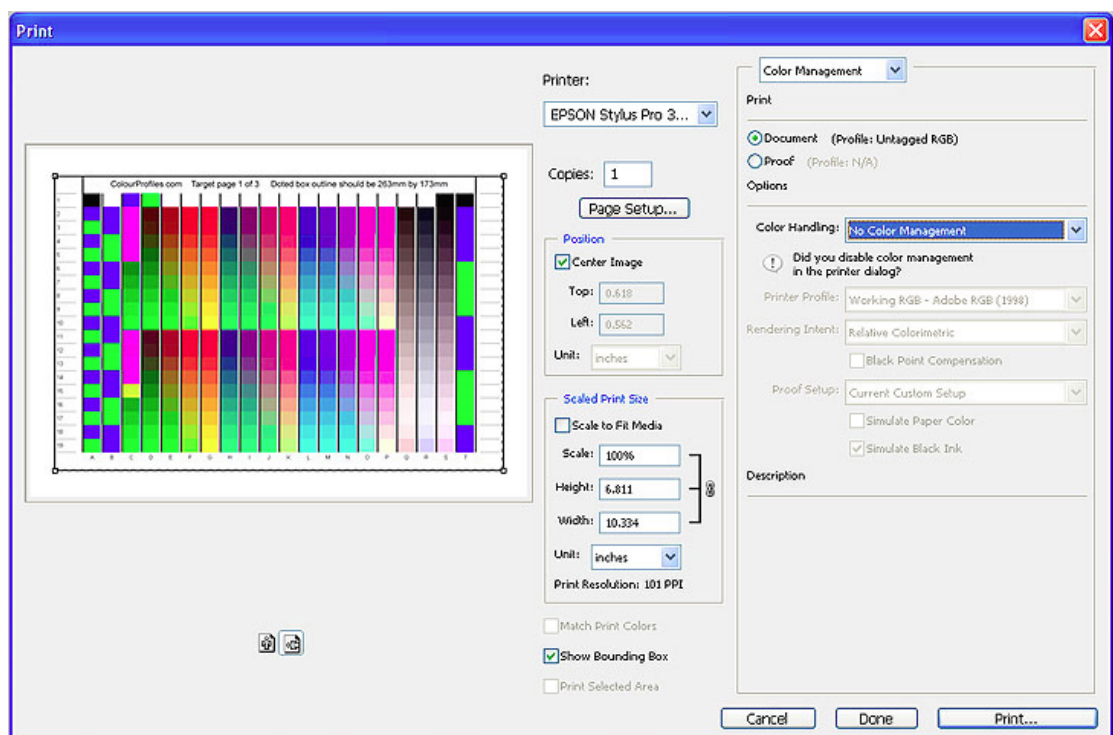
This should ensure that when you open the target files which are untagged you get asked if you want to assign a profile or leave it untagged.



You must leave it untagged.

Photoshop CS3

Photoshop CS3 significantly improves printer management over previous versions. To print without colour management applied, just select "No Color Management" in the "colour management" option. Please ensure 'scale fit to media' is NOT checked and that the document is showing as 'Profile:untagged RGB' in the print box.



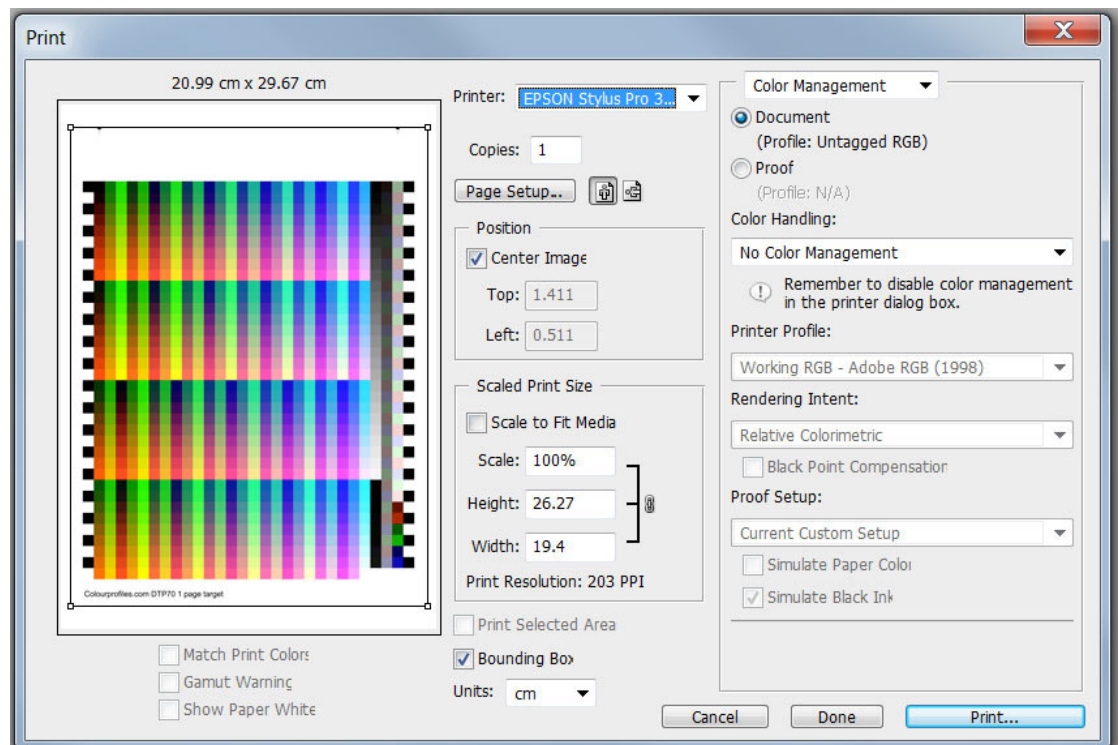
Like previous versions of Photoshop, when you've finished setting all the printer settings, double check the "color handling" setting, it often defaults back to a previous setting.

(Note this screen shot shows one page of our canvas target set, not the one page target)

Photoshop CS4

Photoshop CS4 is very similar to version CS3. To print without colour management applied, just select "No Color Management" in the "colour management" option.

Please ensure 'scale fit to media' is NOT checked and that the document is showing as 'Profile:untagged RGB' in the print box.

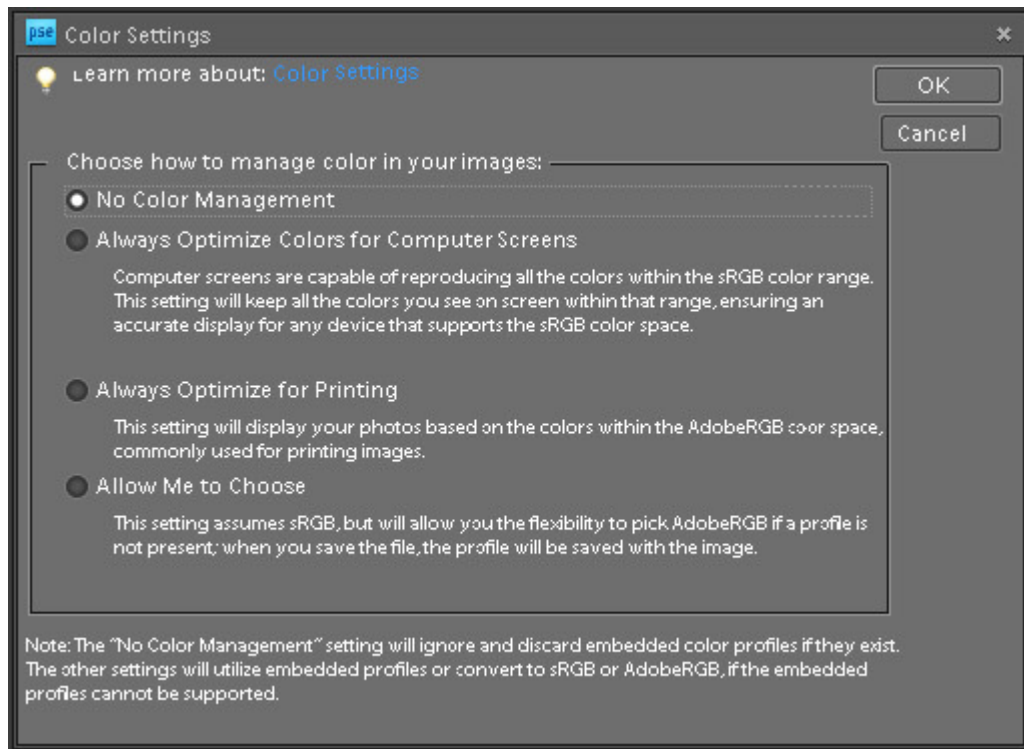


Like previous versions of Photoshop, when you've finished setting all the printer settings, double check the "color handling" setting, it often defaults back to a previous setting.

Photoshop Elements Colour settings (all versions up to 11)

It's important that no colour management is ever applied to the target files prior to printing.

In Photoshop Elements this is controlled by the 'Color settings dialogue' found in the edit menu.



The setting you need to select is 'No color management'

The above screen shot is from Photoshop Elements 8, but all modern versions have a similar options box.

After you've printed the targets you'll need to return to your normal printing setting, either 'Always optimize for printing' or 'Allow me to Choose'

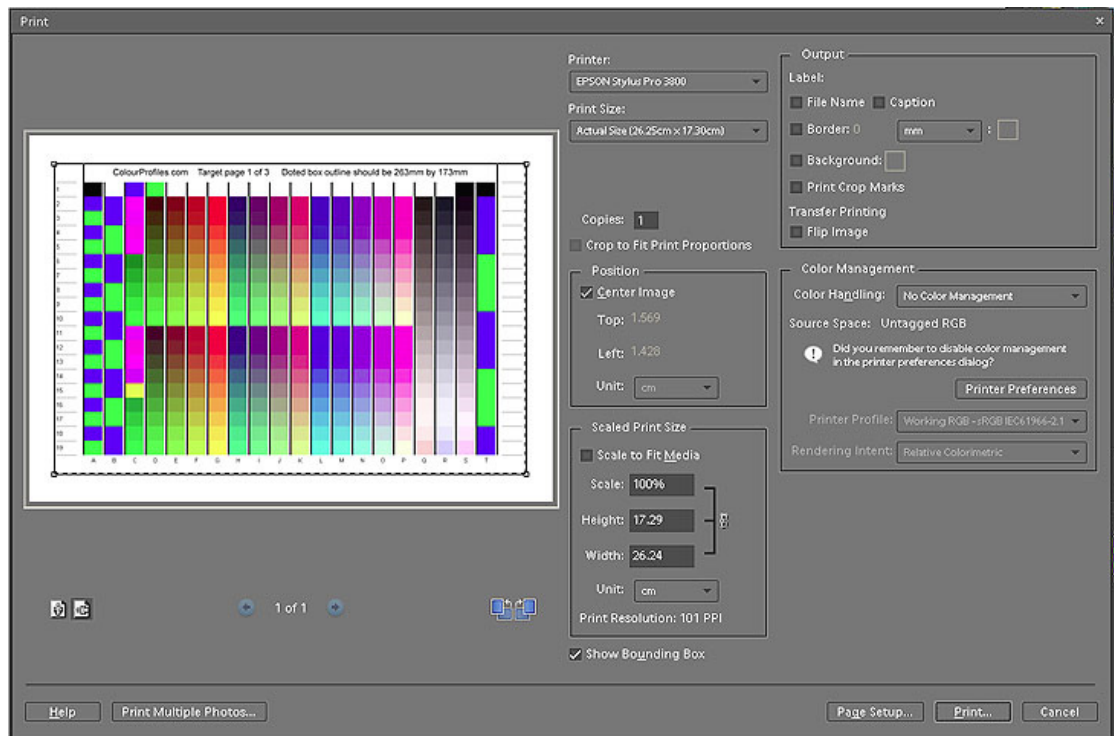
When you've finished setting all the printer settings, double check the "Print Space: Profile" setting, it often defaults back to a previous setting.
Then print the target.

Photoshop Elements 6

Make sure you've turned off colour management from the Edit menu; go to Color Settings. From the dialogue box choose "No color management"

To print the target load the files into Photoshop Elements, ensure that no colour management is applied when opening the file, then choose the Print option on the File menu.

In the print dialogue select 'no color management' in the color handling option in the color management box.



Please ensure 'scale fit to media' is NOT checked and that the document is showing as 'Profile:untagged RGB' as the source space in the color management box.

When you've finished setting all the printer settings, double check the "Print Space: Profile" setting, it often defaults back to a previous setting.

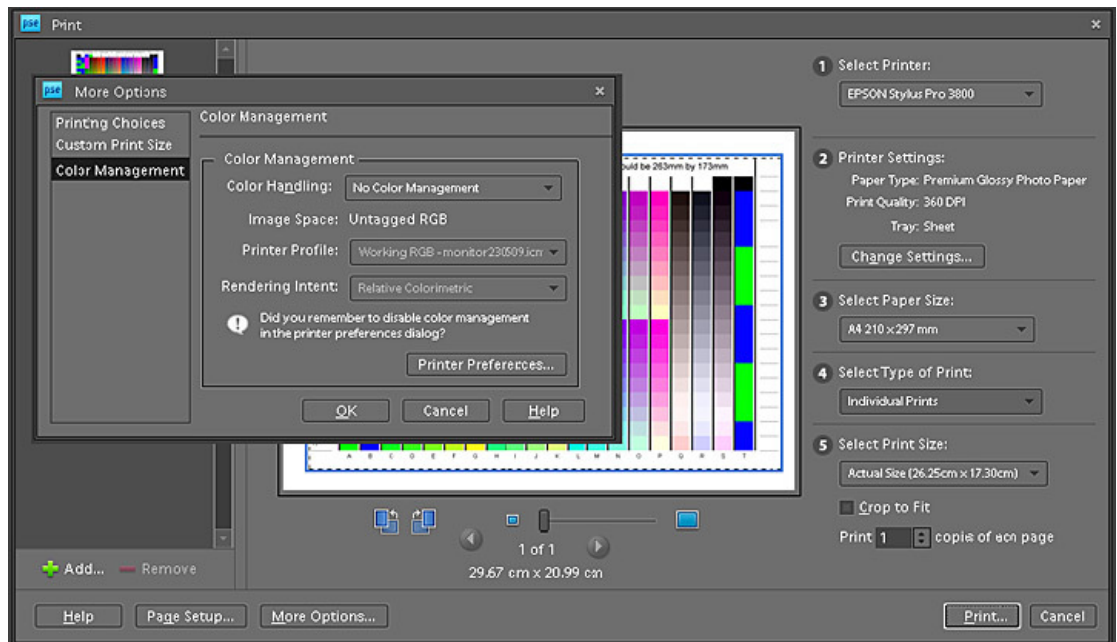
Then print the target.

(Note this screen shot shows one page of our canvas target set, not the one page target)

Photoshop Elements 8 - 11

Make sure you've turned off colour management from the Edit menu; go to Color Settings. From the dialogue box choose "No color management"

Then load the target files into Photoshop Elements, ensure that no colour management is applied when opening the file, then choose the Print option on the File menu.



Choose 'individual print' (option number 4), 'Actual size' for the print size (option number 5), Crop to fit NOT checked.

Then click on 'More Options' and go to 'Color management'

Select No Color Management in the color handling option box,

Check that Image space is reported as 'untagged RGB'

The other options should be greyed out. Some versions allow you choose a rendering intent, this is best set to relative colormetric.

When you've finished setting all the printer settings, double check the "Print Space: Profile" setting, it often defaults back to a previous setting.

Then print the target.

Lightroom (all versions)

Printing profiling targets from Lightroom is NOT recommended. Please use another program such as Photoshop, Photoshop Elements or the Adobe Color printer Utility that allows greater control over the printing process.

Printer driver settings

The printer driver needs to be set NOT to use any colour management. Please read the instructions for each manufacturer and follow them exactly.

Unfortunately there are so many different printers on the market, each of which have may several different driver versions, it's impossible to show the exact driver settings for every one. If you have any queries, email us and we'll help you as much as we can.

The illustrations for this are taken from the Windows drivers for each manufacturer, Mac drivers will look slightly different, but usually have the same overall functions.

Epson

Main Tab:

Media Type: (as appropriate)

Color: check color option

Mode: Custom Then click: Advanced: In the advanced dialogue box:

Check paper type is correct;

Color still selected;

Print Quality 1440 dpi(or appropriate);

Microweave unchecked;

Edge smoothing unchecked;

Flip horizontal unchecked;

High speed unchecked;

Finest detail unchecked;

Color Mangement; **No Color Management checked**

Paper config at defaults

Paper tab:

Paper source; As appropriate

Paper Size; A4

Copies; 1

Orientation; Landscape (Rotate unchecked)

Printable area; Standard and centred

Layout Tab:

All unchecked

Please note some of these options may not be available

Epson 2100/220 printers.

If you have the grey balancer software installed please ensure that no correction is set in the grey balancer software options.

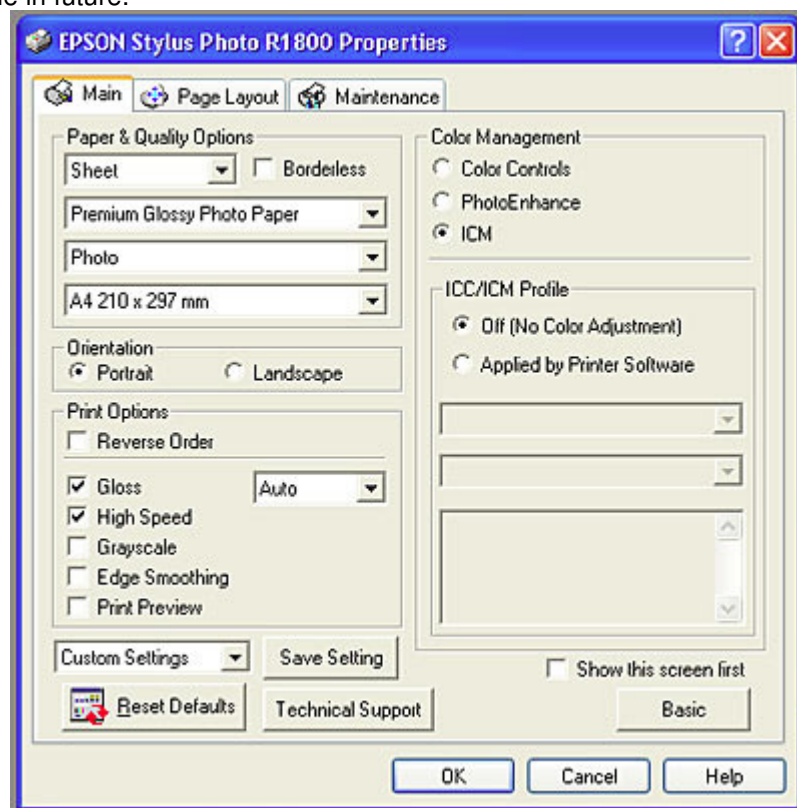
Latest Epsos

The latest Epson Stylus Photo printers like the R800 and R1800 have a newer printer driver design.

When you first use the driver you get the screen below, click on the advanced button to get to the important colour management settings.



It's now worth checking the "Show this screen first" check box in the bottom right to save time in future.



Canon

Select the printer you wish to print to in the "Page setup" dialogue box;

Click on Properties;
In the printer properties dialogue box you will need to make the following settings on each tab.

Main Tab:

- Select appropriate media type
- Select appropriate media source
- Print Quality: Select: Custom then "Set..."
 - In Custom settings select:
 - Quality: Fine
 - Halftoning: Diffusion
- Color Adjustment: Select: manual then "Set..."
 - Set all the color Balance options to the centre 0 position
 - DO NOT check ICM box
 - Select Print Type: NONE
- Greyscale Printing: unchecked
- Preview before printing: unchecked

Page Set up Tab:

- Page Size: A4
- Orientation: Landscape
- Printing Type: Normal-size printing
- Borderless printing: unchecked
- Duplex printing: unchecked
- Copies: 1

Stamp/Background Tab:

- Nothing selected

Effects Tab:

- Nothing selected

Profiles Tab:

- Nothing selected
- Note: This tab/page is not connected with ICC/ICM colour printing profiles, it just saves a set of driver settings. You may find it useful to save the above settings as a default for printing with colour management in future.

Hewlett Packard

HP recommend setting the Color Space option on the color tab in their printer driver to "ICM enabled" when printing targets for profiling. And NOT applying a profile in the printing software.

Others

Please consult your printer documentation and set the printer driver NOT to apply any profile if possible.